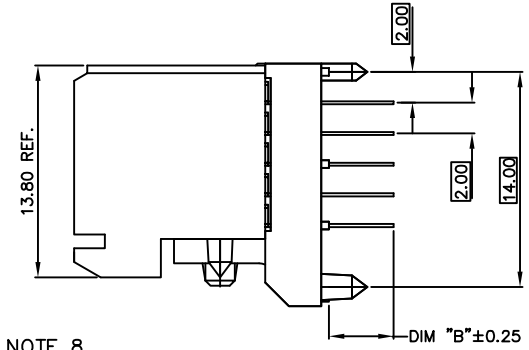
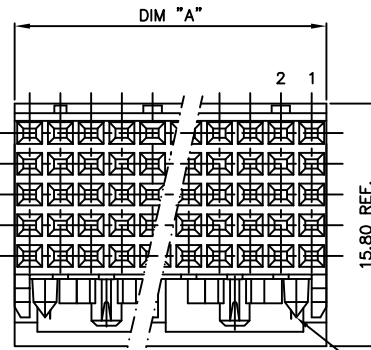
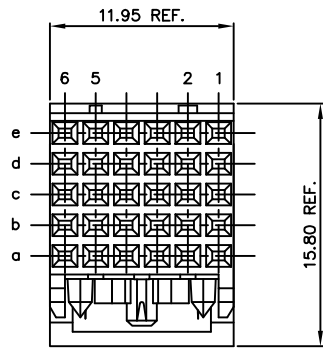


Tous droits strictement réservés. Reproduction ou communication à des tiers Interdite sous quelque forme que ce soit sans autorisation écrite du propriétaire. Propriété de c FCI. Droits de reproduction FCI.



All rights strictly reserved. Reproduction or issue to third parties in any form whatever is not permitted without written authority from the proprietor. Property of FCI. Copyright FCI.

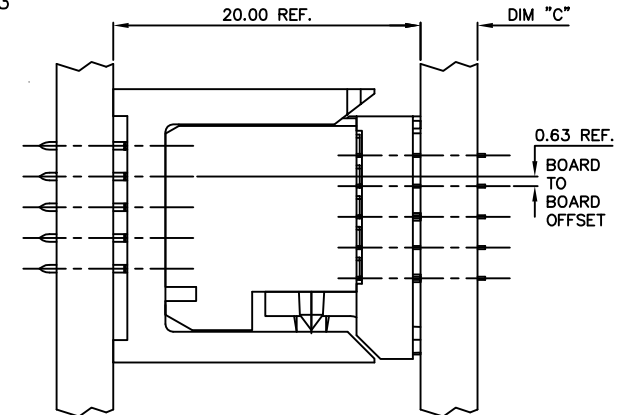
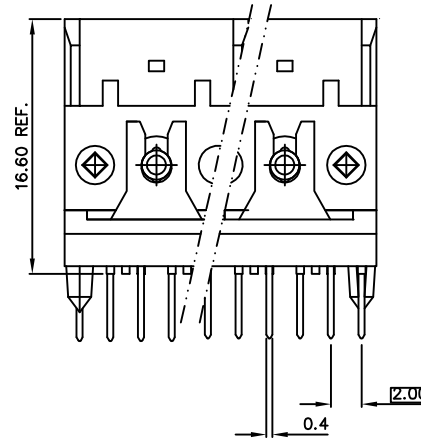
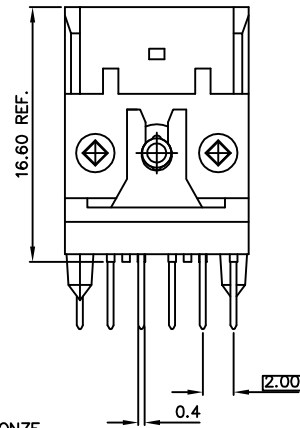
PRODUCT NUMBER
94560-YYY
94560-YYLF



5X6 POS. -X11, -X12, -X13 AND -X51,-X52

5X12 POS. -X21, -X22, AND -X23  
 5X24 POS. -X31, -X32, AND -X33  
 5X48 POS. -X41, -X42, AND -X43

NOTE 8



NOTES:

- BODY MATERIAL: LCP 30% GLASS  
FLAME RETARDANT ACC. UL 94-V0
- TERMINAL MATERIAL: PHOSPHOR BRONZE
- PLATING ON SOLDER TAILS:  
94560-YYY IS SnPb  
94560-YYLF IS Sn (LEAD FREE)
- INDICATED HOLES ARE UNPLATED.
- RECOMMENDED HOLE PATTERN ON SHEET 3.
- DIMS. A, B, AND C ON SHEET 2.
- PRODUCT MARKING: PART NUMBER AND BATCH I.D.
- DIAMOND LOCATION PEG ARE ONLY EXISTED ON THE BOTH SIDES OF PRODUCT.
- THE PRODUCTS WHERE THE PART NUMBER ENDS IN LF MEET THE EUROPEAN UNION DIRECTIVES AND OTHER COUNTRY REGULATIONS AS DESCRIBED IN GS-22-008.  
ALL PRODUCTS WILL WITHSTAND EXPOSURE TO 260° FOR 60 SECONDS IN A CONVECTION, INFRA-RED OR VAPOR PHASE REFLOW OVEN.
- FOR LEAD FREE PART NUMBERS, ADD AN 'LF' SUFFIX.  
EXAMPLE: 94560-111LF

PLATING CONTACT AREA:

DASH NR:	PERFORMANCE LEVEL
-1YY	TELCORDIA CO
-2YY	CUSTOMER SPECIAL
-9YY	TELCORDIA CO
-1YYLF	TELCORDIA CO
-2YYLF	CUSTOMER SPECIAL
-9YYLF	TELCORDIA CO

SEE NOTES 9 & 10

mat'l. code		tolerances unless otherwise specified		CUSTOMER COPY		FCI	
SEE NOTES						www.fciconnect.com	
ltr	ecn no	dr	date	linear	.X ±.3	projection	title
K	0606-0217	CLu	6/01/06		.XX ±.10		VERTICAL SIGNAL RECEPT. ASSY. -5 ROW
L	0607-0171	Cenh	05/25/07		.XXX ±.050		
M	0608-0171	TER	8/18/08	angles	0° ±2'		product family METRAL (tm) size dwg no
-	-	-	-	dr	STU STONER 7/29/96		
G	V10803	JWS	1/24/01	enrg	R.DOUTRICH 7/29/96	scale 1:1	A 94560
H	V03-0722	LP	8/22/03	chr	STU STONER 7/29/96		
J	V05-0572	TAB	7/25/05	appd	STU STONER 7/29/96		code 213
sheet index	revision sheet	M	M	M	M		sheet 1 of 4

1 | 2

3 |

4

ACAD

PDM: Rev:M

STATUS: Released

Printed: Nov 17, 2008

cage code  
22526

1 | 2

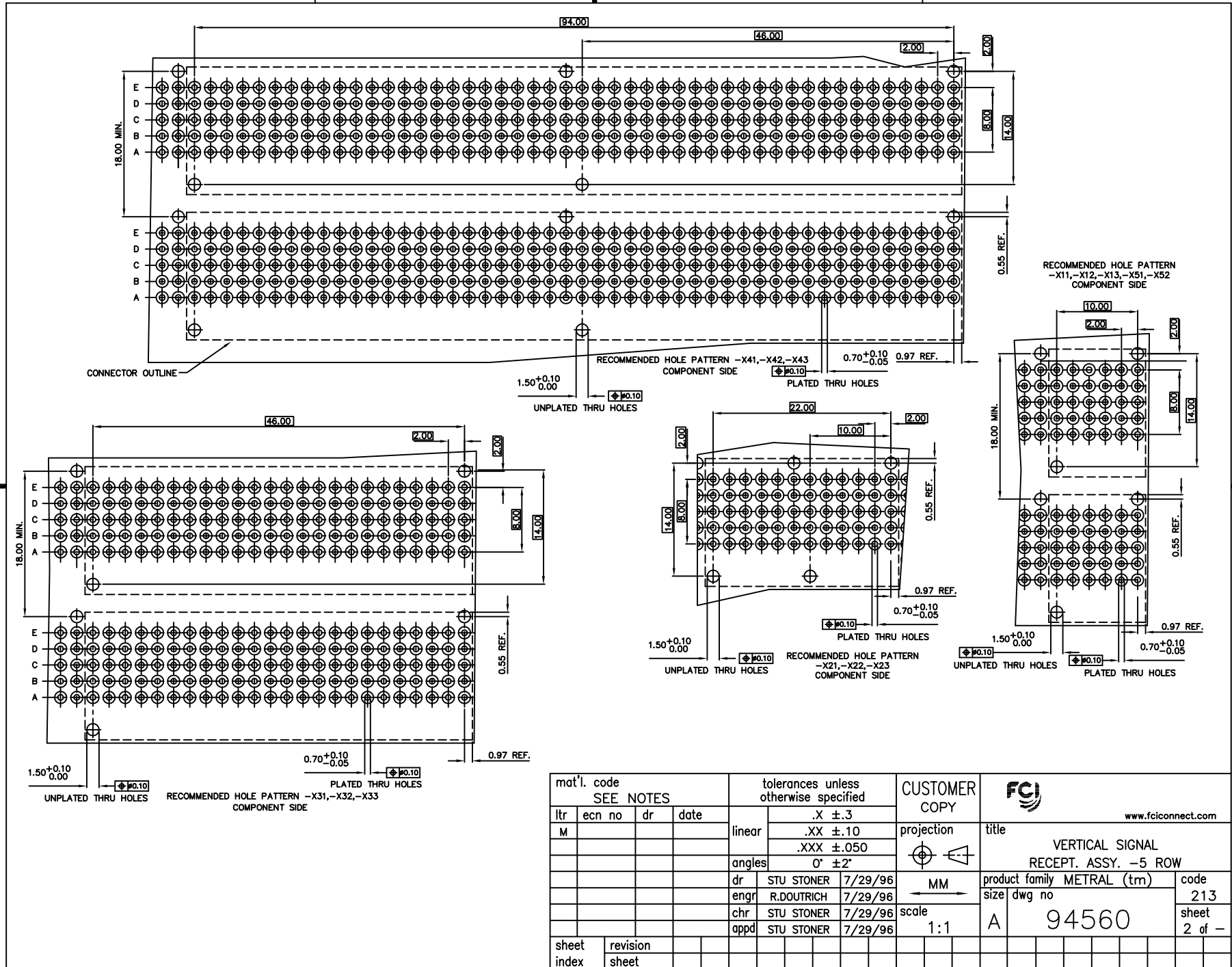
3 |

4



All rights strictly reserved. Reproduction or issue to third parties in any form whatever is not permitted without written authority from the proprietor. Property of FCI. Copyright FCI.

Tous droits strictement réservés. Reproduction ou communication à des tiers Interdit sans autorisation écrite du propriétaire. Propriété de c FCI. Droits de reproduction FCI.



1 | 2

3 |

4

1 | 2

3 |

4

ACAD

PDM: Rev:M

STATUS: Released

Printed: Nov 17, 2008

cage code  
22526

Tous droits strictement reserves. Reproduction ou communication a des tiers Interdite sous quelque forme que ce soit sans autorisation écrite du propriétaire. Propriete de c FCI. Droits de reproduction FCI.



All rights strictly reserved. Reproduction or issue to third parties in any form whatever is not permitted without written authority from the proprietor. Property of FCI. Copyright FCI.

PRODUCT NUMBER *	DIM "A"	DIM "B"	DIM "C" PCB THK.
94560-X11	-----	2.65	1.6
94560-X21	23.95 REF.	2.65	1.6
94560-X31	47.95 REF.	2.65	1.6
94560-X41	95.95 REF.	2.65	1.6

PRODUCT NUMBER *	DIM "A"	DIM "B"	DIM "C" PCB THK.
94560-X12	-----	3.45	2.4
94560-X22	23.95 REF.	3.45	2.4
94560-X32	47.95 REF.	3.45	2.4
94560-X42	95.95 REF.	3.45	2.4

PRODUCT NUMBER *	DIM "A"	DIM "B"	DIM "C" PCB THK.
94560-X13	-----	4.25	3.2
94560-X23	23.95 REF.	4.25	3.2
94560-X33	47.95 REF.	4.25	3.2
94560-X43	95.95 REF.	4.25	3.2

\* SEE NOTE 10

A

A

B

B

mat'l. code SEE NOTES				tolerances unless otherwise specified			CUSTOMER COPY		FCI www.fciconnect.com	
ltr	ecn no	dr	date	linear	.X ±.3		projection	title VERTICAL SIGNAL RECEPT. ASSY. -5 ROW		
M					.XX ±.10					
				angles	.XXX ±.050		MM	product family METRAL (tm) code size dwg no 213		
					0° ±2'					
				dr	STU STONER	7/29/96	scale 1:1	A 94560 sheet 3 of -		
				enr	R.DOUTRICH	7/29/96				
				chr	STU STONER	7/29/96				
				appd	STU STONER	7/29/96				
sheet index	revision sheet									

Tous droits strictement reserves. Reproduction ou communication a des tiers interdite sous quelque forme que ce soit sans autorisation écrite du propriétaire. Propriete de c FCI. Droits de reproduction FCI.



All rights strictly reserved. Reproduction or issue to third parties in any form whatever is not permitted without written authority from the proprietor. Property of FCI. Copyright FCI.

PRODUCT NUMBER *	DIM "A"	DIM "B"	DIM "C" PCB THK.	CONFIGURATION						
				6	5	4	3	2	1	
94560-X51	-----	4.25	3.2	E	-	X	-	-	-	-
				D	-	X	-	-	-	-
				C	-	-	-	-	-	-
				B	-	X	-	-	-	-
				A	-	X	X	-	-	-
94560-X52	-----	2.65	1.6	E	-	X	-	X	-	X
				D	-	X	-	X	-	X
				C	-	X	-	X	-	X
				B	-	X	-	X	-	X
				A	-	X	-	X	-	X

\* SEE NOTE 10

(-) REPRESENTS AN EMPTY POSITION  
(X) REPRESENTS A LOADED POSITION

mat'l. code SEE NOTES				tolerances unless otherwise specified			CUSTOMER COPY		 www.fciconnect.com	
ltr	ecn no	dr	date	linear	.X ±.3		projection	 title VERTICAL SIGNAL RECEPT. ASSY. -5 ROW		
M					.XX ±.10					
				angles	0° ±2'		 MM	product family METRAL (tm) code size dwg no 213		
				dr	STU STONER	7/29/96				
				enr	R.DOUTRICH	7/29/96	scale 1:1	A 94560		
				chr	STU STONER	7/29/96				
				appd	STU STONER	7/29/96	sheet 4 of -			
sheet index	revision sheet									

cage code  
22526

ACAD

PDM: Rev:M

STATUS: Released

Printed: Nov 17, 2008